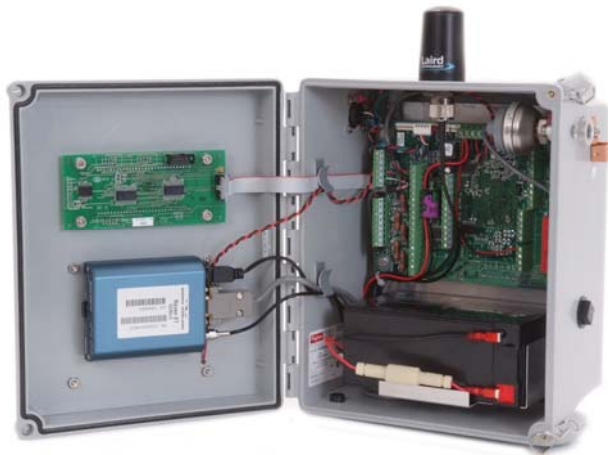


# WIRELESS COMMUNICATIONS

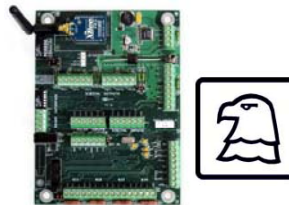


The growth of the wireless communications industry has brought with it a corresponding level of increased complexity in choosing the most efficient and cost effective medium to transfer data from the field device to the office. Eagle Research serves as a value added resource to our customers in determining what mediums are available, who the available carriers are, and in evaluating the pricing structure for the communications type and frequency of polling ultimately chosen by the customer. All Eagle Research **XA Series™** RTU's and flow computers are shipped wireless ready or with the wireless device pre-installed to customer specifications.

Many factors determine the choice of wireless communications infrastructure, i.e. frequency of data availability and alarms, required antenna choices, and power requirements. Eagle Research is available to assist our customers with all of their needs and requirements to make the transition to wireless data as seamless and cost effective as possible.



IP Cellular



Remote I/O



Satellite Radio



Licensed/Unlicensed Radio



Bluetooth Adaptor

By working with a knowledgeable partner, options and opportunities abound to improve the "bottom line" by using tightly integrated IP and other communication methods. Eagle Research is leading the way in the transition of the natural gas industry to wireless communications. With the addition of our **Remote I/O** product, wireless sensors of many different types can be implemented. Eagle Research remains on the cutting edge of today's communications technology, filling the void for the natural gas industry. We offer nearly every medium of communications as an addition to our hardware to better assist the technicians in the field.