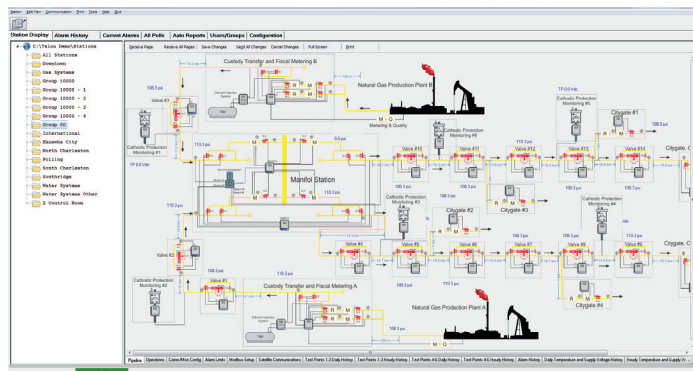


Eagle Research Corporation® designed the Talon™ family specifically to meet the user's needs, providing software modules for both central office and field operations. Talon™ Software Suite provides application solutions for Natural Gas, Water/Wastewater, Environmental Protection, Steam, and Electrical applications. Industrial/Commercial Measurement, Pressure/ Temperature Monitoring, Supervisory Control, and Odorization are but a few of the systems that can benefit from the use of this software.

- The Talon™ family of products has been designed as a Windows® based setup, configuration, device management, and polling tool for the Eagle Research Corporation® family of products
- Windows® Explorer style formatting and menus for station viewing provide a familiar look and feel for a shorter learning curve for use.



## TALON SCE™

Talon SCE™ (Single Computer Edition) provides a single computer based software platform to perform the functions often segregated into separate SCADA and Electronic Measurement Systems. The Talon™ family software gives you the ability to create a powerful host platform that can be tailored and scaled to meet specific and diverse user needs. Flexibility in the software design offers the option to purchase only the software component modules that the customer needs. Talon SCE™ has the ability to expand the system with additional features by adding new modules in the future when additional customer needs require. The users and groups function offers password access/control for viewing, editing, and other administrative functions. User shift schedules can be entered for alarming and reporting through e-mail, SMS, and voice calls using the optional Alert Server software module. This software is uniquely suited to meet the needs of the small to intermediate size companies. Talon SCE™ is suitable for a reduced scale SCADA system supporting Four Serial IOs and One TCP Port, but can be expanded for larger applications, polling multiple devices over several communications ports simultaneously.

- Windows® Operating System: Server 2003, 2008, 2012; Windows® 7, 8.1, 10
- SCADA and Data Collection System
  - (4) Serial Comm Ports & (2) TCP/IP Ports (2 incoming and 2 outgoing)
- Expandable Based on Polling Interval Needs
- Data Trending
- Automated Report and Polling Scheduler
- Multi-Pen Historical Quick Trend Graphing
- Alarm Viewer
- Data Import Utility



## TALON SCE™



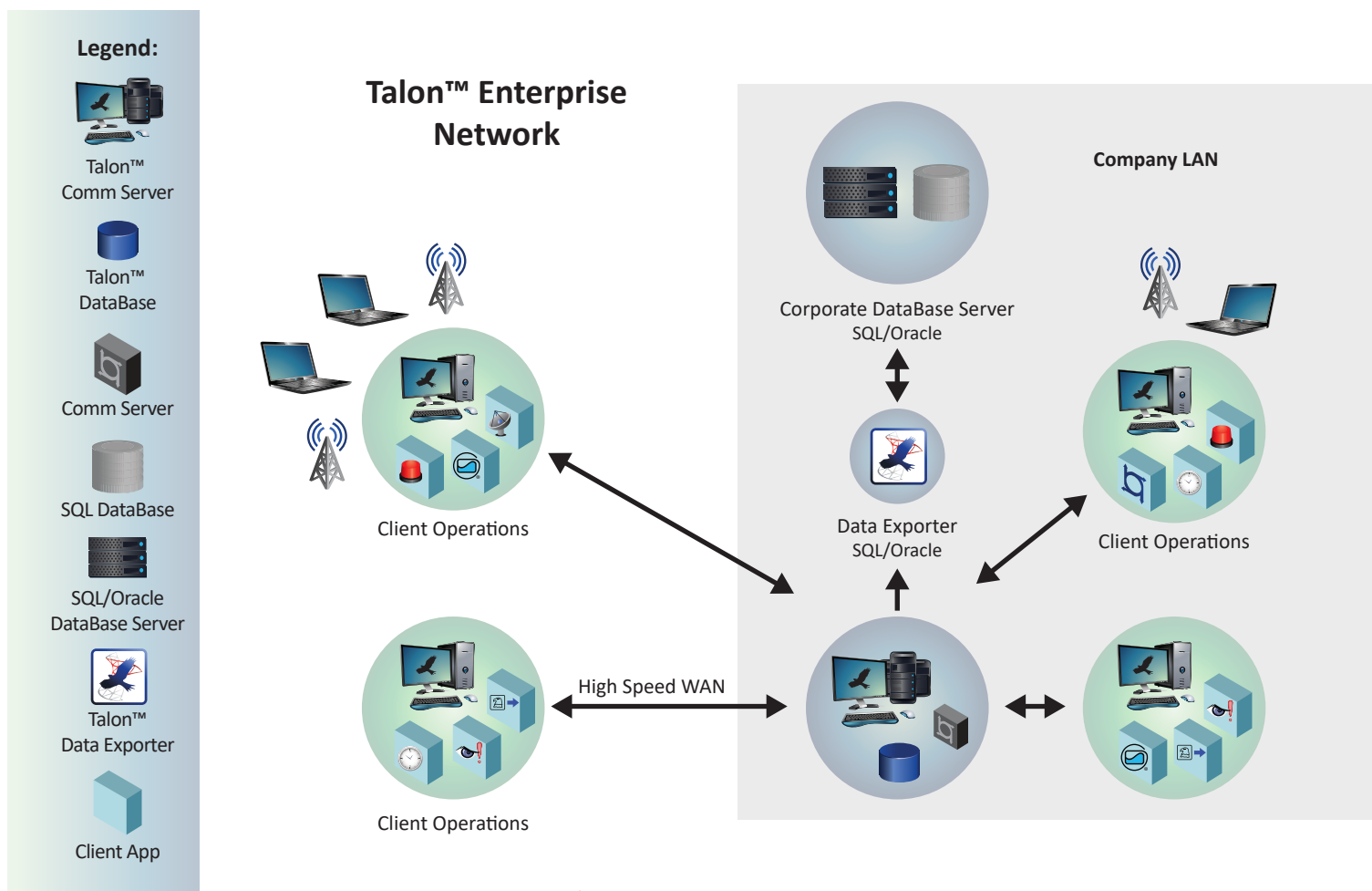
**EAGLE RESEARCH  
CORPORATION**

# TALON ENTERPRISE™

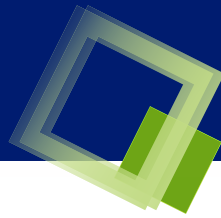
Talon Enterprise™ provides a company-wide server based network platform to perform the functions that are often segregated into separate SCADA and Electronic Measurement Systems. The Talon™ family of software gives the user the ability to create a powerful host platform that meets specific and distributed data collection requirements.

The modular and flexible service-oriented architecture offers the option to purchase only the specific modules needed, and the ability to expand the system with additional features by adding new modules as system requirements change. Software modules can be configured and deployed across either a Wide Area Network (WAN) or Local Area Network (LAN) for central office and/or field operations.

In the current energy industry environment, many companies are scattered across state and international boundaries. Having the ability to distribute Talon Enterprise™ modules across the network infrastructure puts collection and management of the data closer to the source, resulting in improved overall system performance.



## TALON ENTERPRISE™



## Optional Features:

- Voice Alert (Cry-Out)
  - Voice, Email, SMS
- Data Exporters
  - Data Replicators for Industry Standard Databases MS SQL® & Oracle®
  - FLOW-CAL® Data Exporter, Various Reporting Packages
  - Export to PGAS
- ActiveX Control for MS Excel®
- High Level, Distributed Process Graphics
- Web Exports for Data & Graphics
- (8) Serial Comm Ports and (8) TCP/IP Ports (8 incoming & 8 outgoing)
- Expandable to (32) Serial & (64)TCP/IP ports
- Off-Site Comm Server (TCP/IP)
- WatchDog Module

## Related Services:

- Specification Development
- Custom Screen Design and Report Writing
- System Start-up & Test
- Web Publishing
- Various Levels of Training
- Support Packages

## Embedded Graphics:

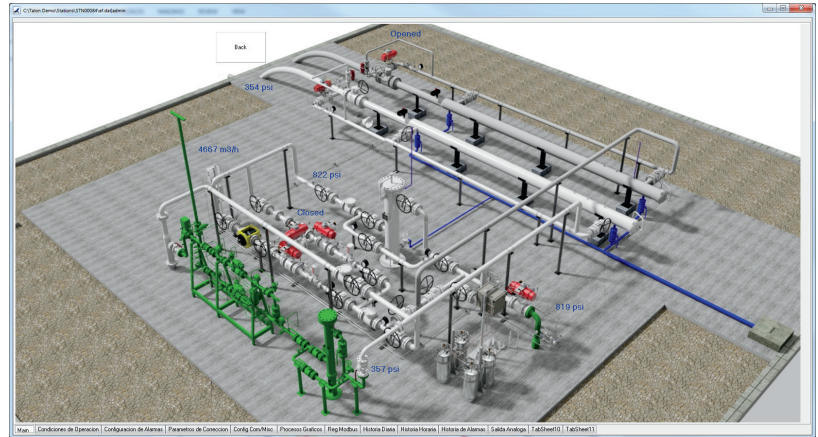
- Add Graphic Objects to display data
- Add Photos & Diagrams
- Information grouping

## Interactive Host Based Alarms:

- Using the Talon™ ActiveX Option, calls can be made directly to the Talon™ Database, and then used in custom built Excel® Spreadsheets

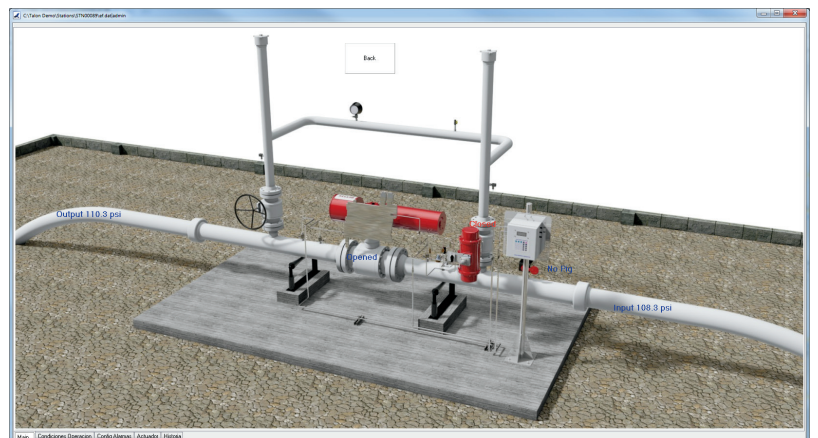
## No Limitations:

- Add Graphics, Live Data and ActiveX Controls to Provide Live Integration to Many Popular Platforms



## Overview:

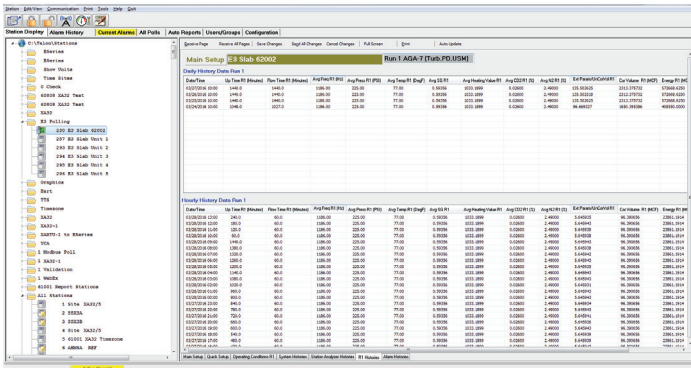
- Windows® Operating System: Server 2003, 2008, 2012; Windows® 7, 8.1, 10
- RTU Programming Support Package
- Multi-Level User Password Access
- Modular Design for Scalable Deployments
  - Communications Server for COMMS Management
    - Support for Single Server, Corporate, or Distributed Wide Area Network
  - PC Compatible Flat-File Version
    - Multi-PC LAN Support Through Drive Mapping
  - Client – Server Database Version
    - Support for MS SQL® and Oracle®
    - Support for Single DB or Distributed Wide Area
- Base Components
  - Desktop Explorer, Scheduler, Reporting Tool, and Auto Reporting
- Process Programming Support



# TALON LITE™

In response to numerous customer requests for a reduced cost version of Talon SCE™ that included on screen graphics, Talon Lite™ was launched. Talon Lite™ is packaged with a single TCP/IP Comm Port to

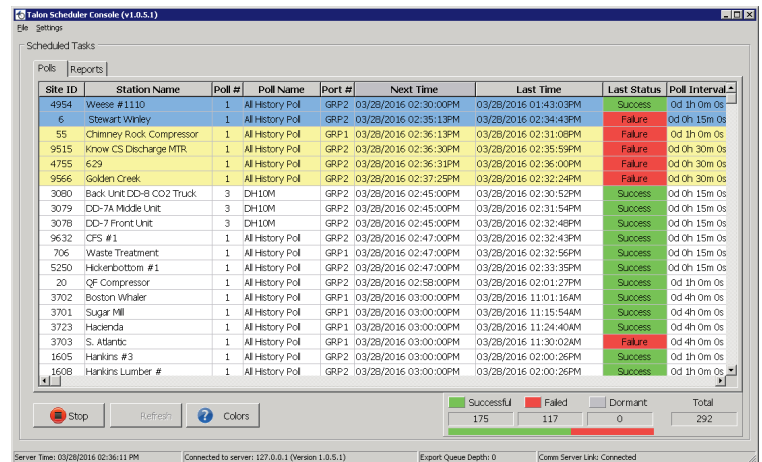
permit polling across the Internet with a mobile laptop that included access to a cellular or other mobile data plan or from a single desktop machine with network Internet access. A serial communications port is included as well for land-line or direct communications. Process programming and Edit Forms may be created as well allowing users to create new applications or modify existing field RTU loads. Parameter changes and other set-points can be edited using the Talon Lite™ software Edit Forms.



## TALON LITE™

**Talon Monitor™ Read-Only software is available upon request.**

- Windows® Operating System: Server 2003, 2008, 2012; Windows® 7, 8.1, 10
- Process Programming
- Master Load Creation and Management
- SCADA and Data Collection System
  - (1) Serial Comm. Port and (1) TCP/IP Port (1 incoming and 1 outgoing) non expandable
- Data Trending, Scheduling, and Auto Reporting
- Includes Circular Charting Capability
- Edit Form Text and Graphics Editor



## TALON™ FAMILY

Whether the concern is natural gas distribution, gas pipeline transmission, or well head production, the Talon™ family of software gives the users the ability to create a powerful scalable system that meets their specific needs. Its flexible design provides the option to purchase only those modules needed, and the ability to expand a system with additional features by adding new modules with future growth.