

ERC SPRING PRODUCT TRAINING (IN PERSON)

SPRING PRODUCT TRAINING

1st Day Morning - MPplus

- MPplus Product Overview
- MPplus Out of Box Setup
- Working with FM and MPplus
- Getting Familiar with MPplus Process Board

1st Day Afternoon - XARTU/1

- XARTU/1 Product Overview
- XARTU/1 Out of Box Setup
- Working with FM and XA
- XA Unit Calibration
- Getting Familiar with XA Hardware

2nd Day Morning - Installation/Power/Comm

- Installation
- Grounding and Surge Protection
- Power Supply Options
- Communication Options
- Cellular Modem Setup
- Trouble Shooting

2nd Day Afternoon - E-Series

- E-Series Product Overview
- E-Series Out of Box Setup
- Working with FM and ESeries
- E-Series Unit Calibration
- Getting Familiar with ESeries Hardware

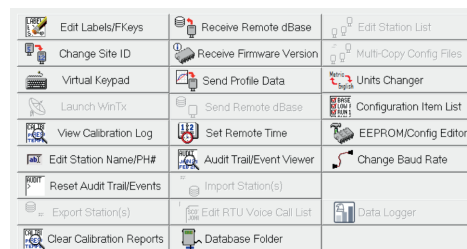
3rd Day Morning - MPplus II

- MPplus II Overview of Products
- Working with FM and MPplus II
- MPplus II Cellular Modem
- MPplus II Hardware Overview

PRODUCT TRAINING: This two and half day, instructor-led course, provides the participants the knowledge and skills necessary to use Eagle's standard Volume Correctors, Flow Computers, RtpM Pressure Recorders and Field Manager Software. The training is organized in two parts (diagram on back). First MPplus, XARTU/1, and Power/Communication. Second Power/Communication, ESeries and our new MPplus II.

The objective for the program will be to provide everyone attending the Training with a solid working knowledge of the Eagle Research® Standard Products & Field Manager™ Software. Attendees will be exposed to a variety of Eagle personnel during the training process. You are encouraged to bring a laptop computer with you so that we may load Field Manager™ Software for you to work.

The Training Process is structured to build on prior modules as the time goes along, so attempting to pick and choose certain modules is not encouraged, as we are attempting to cover a lot of ground in a relatively short period of time.



ERC FALL PRODUCT TRAINING (IN PERSON)

FALL PRODUCT TRAINING

1st Day Morning - MPplus II Series

- MPplus II Product Overview
- MPplus II Out of Box Setup
- Working with FM and MPplus II
- Getting Familiar with MPplus II Hardware

2nd Day Morning - Installation/Power/Comm

- Installation
- Grounding and Surge Protection
- Power Supply Options
- Communication Options
- Cellular Modem Setup
- Trouble Shooting

2nd Day Afternoon - E-Series

- E-Series Product Overview
- E-Series Out of Box Setup
- Working with FM and E-Series

3rd Day Morning - E-Series

- E-Series Unit Calibration
- Getting Familiar with E-Series Hardware

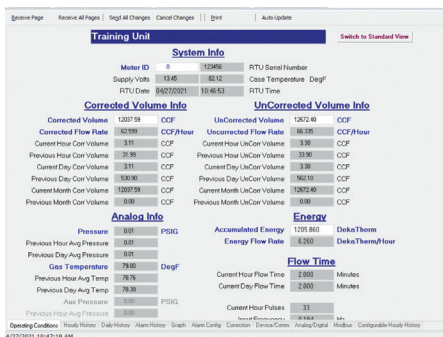
PRODUCT TRAINING: This two and half day, instructor-led course, provides the participants the knowledge and skills necessary to use Eagle's standard Volume Correctors, Flow Computers, RtpM Pressure Recorders and Field Manager Software. The training is organized in two parts (diagram on back). First MPplus II, and Power/Communication. Second Power/Communication, E-Series.

The objective for the program will be to provide everyone attending the Training with a solid working knowledge of the Eagle Research® Standard Products & Field Manager™ Software. Attendees will be exposed to a variety of Eagle personnel during the training process. You are encouraged to bring a laptop computer with you so that we may load Field Manager™ Software for you to work.

The Training Process is structured to build on prior modules as the time goes along, so attempting to pick and choose certain modules is not encouraged, as we are attempting to cover a lot of ground in a relatively short period of time.

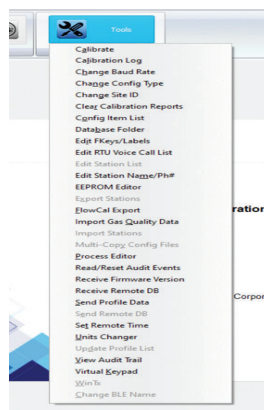


Menu Bar

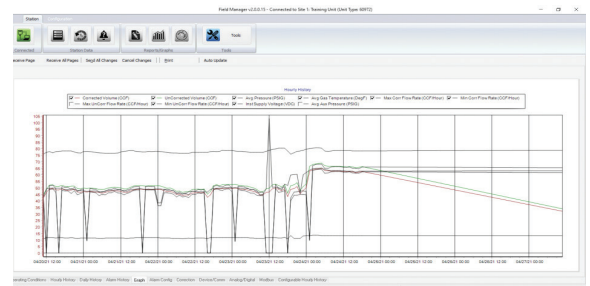


Station Data

Data Viewing and Software Configuration tabs.



Tool Bar



Live Graphing Feature

Field Manager™ allows live graphing on select process items.

ERC TALON SCE SOFTWARE TRAINING (VIRTUAL)

VIRTUAL TALON SCE SOFTWARE TRAINING

1st Day

- Talon Introduction
- Talon installation and activation
- Working with Stations and Station Groups
- Talon Comm Server
- Working with Point and Process Display
- Working with Histories

2nd Day

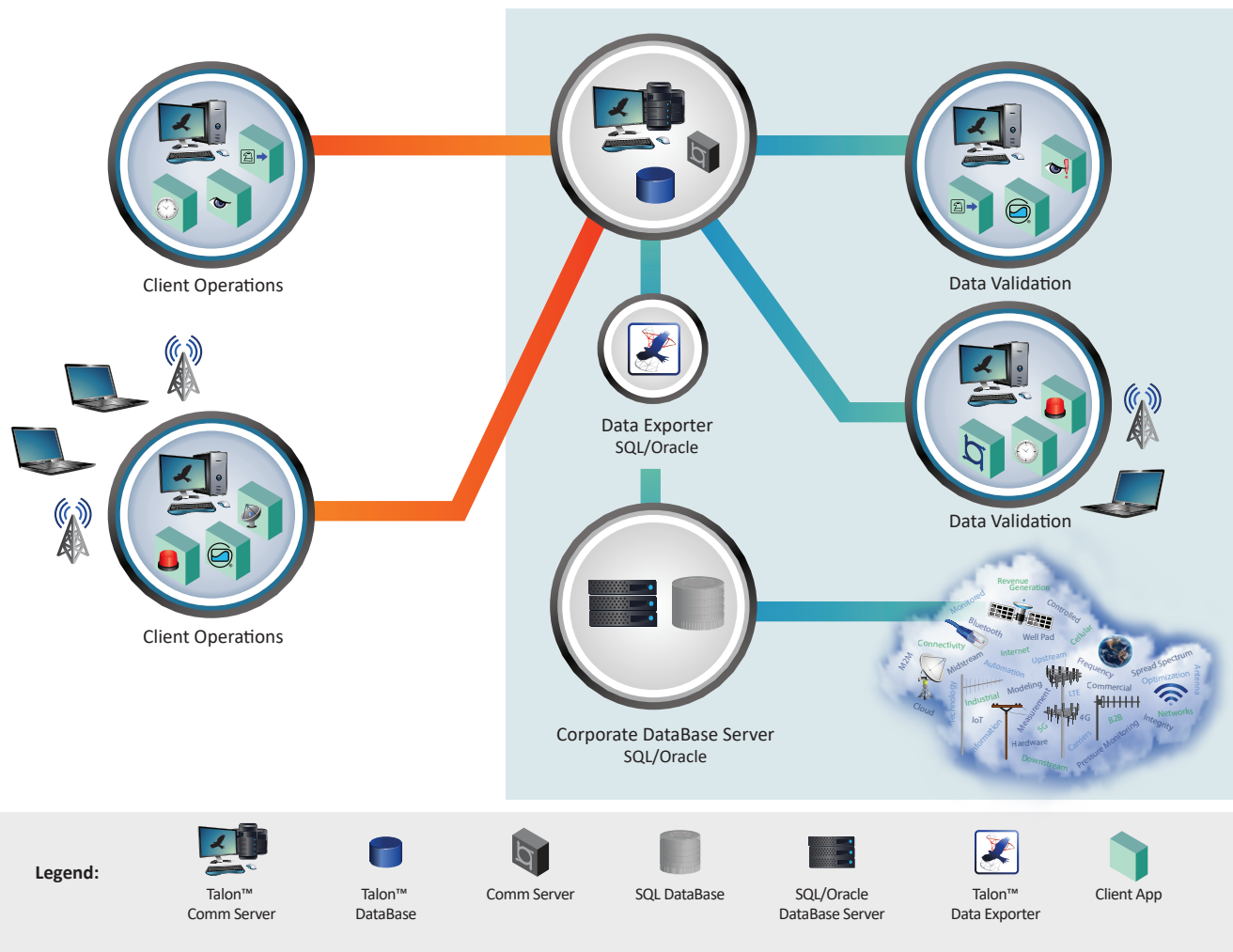
- Working with Auto Polling - Talon Scheduler
- Talon Users/Groups
- Alarm Handling/Alert Server
- Working with Talon Edit Forms

3rd Day Morning

- Report Generator
- Data Exporter
- Data Importer
- Email Dispatcher
- Review

TALON TRAINING: This two and a half day instructor-led course provides participants the knowledge and skills necessary to successfully use Talon SCE™ Software. This course is intended for people involved in deploying, operating, and maintaining Talon SCE™ SCADA software.

The objective for the program will be to provide everyone attending the Training with a solid working knowledge of the Eagle Research® Talon SCE™ Software. Attendees will be exposed to a variety of Eagle personnel during the training process. You are encouraged to bring a laptop computer with you so that we may load Talon™ Software for you to work with while you are attending the training session.



EAGLE RESEARCH CORPORATION TRAININGS

Spring Product Training 2023 (In Person) is April 18-20, 2023
Fall Product Training 2023 (In Person) is October 17-19, 2023
Talon SCE Software Training 2023 (Virtual) is October 24-26, 2023

PRODUCT TRAINING DATES AND PRICES:

- **April 18-19 (1 ½ Day)** - XA and MPplus Training with Field Manager Software (\$150 per person)
- **April 19-20 (1 ½ Day)** - E-Series and MPplus II with Field Manager Software (\$150 per person)
- **October 17-18 (1 ½ Day)** - MPplus II Series with Field Manager Software (\$150 per person)
- **October 18-19 (1 ½ Day)** - E-Series with Field Manager Software (\$150 per person)

Full Training Pricing:

\$300/person. For three people from the same company, the total cost will be \$750 (a savings of \$150).

VIRTUAL TALON SCE TRAINING DATES AND PRICES:

- **October 24-26 (2 ½ Day)** (\$350 per person)

Full Training Pricing:

\$350/person. For three people from the same company, the total cost will be \$900 (a savings of \$150).

SPECIAL PRICING IF YOU REGISTER FOR ALL TRAININGS (FULL WEEK):

April 18-20 or October 17-19 with Virtual Talon special price is \$500/person.

PAYMENT: Payment must be made prior to attending the Training session. Checks should be made payable to Eagle Research Corporation®, and should reference “ERC – Training Session” with the names of those attending.

Credit card payments are accepted (Visa/Master Card).

TRAVEL INFORMATION

Airline reservations should be made into Charleston, WV and US Air, Continental, United, Northwest Air and Delta all serve the local market. The Charleston Airport is approximately 25 miles from our facility. Lodging is also available locally (approximately 5 min. from our facility)

The Holiday Inn Express conveniently located approximately one mile from our facility. Both the Hampton and the Holiday Inn are located off of Exit 39 on I-64 west of Charleston, WV.

If you prefer to stay in Charleston, there are a number of hotels available there as well, and we will be happy to make recommendations to you at your request.

REGISTRATION

To register, please visit www.eagleresearchcorp.com/Services/Training.aspx

For more information, please email training@eagleresearchcorp.com